

## CONTACT INFO



FOR MORE INFORMATION  
ABOUT OUR RECOVERY HOME  
OR PROGRAM, CALL

Eddie Mansfield  
Managing Director  
AT 850-974-4573  
eddie.pathofgrace@aol.com

### THRIFT STORE LOCATIONS

Miramar Beach Store  
10962 HWY 98 W  
Miramar Beach, FL

CALL FOR FURNITURE PICKUP  
850-654-8500



[www.pathofgrace.net](http://www.pathofgrace.net)

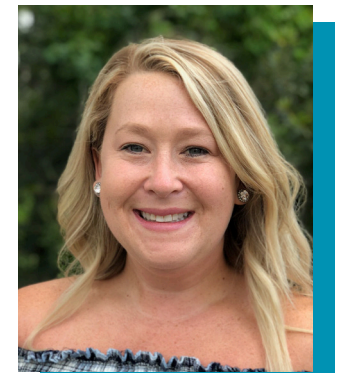
## PATH OF GRACE PARTNERS WITH THE WALTON COUNTY JAIL

### ASSISTANT DIRECTOR'S HEAD UP WALTON COUNTY JAIL MINISTRY.

It's been roughly a year now that Path of Grace has been partnering with the Walton County Jail in conducting what we call a jail ministry. Path of Grace Assistant Directors, Brandee Wilson and Tiffany Garner helped start that partnership and, through it, minister to the women inmates in the Defuniak Springs jail. Brandee and Tiffany choose three women from the Path of Grace Recovery Program to join them each week. The POG women give their testimonies to the inmates and spur conversation about recovery. At the jail, they talk and work with a different group of women in the jail every week, to give them encouragement and hope. While many of the participating inmates want to become Path of Grace residents, the class is not about getting into the Path of Grace. It is more about promoting recovery, sharing the Word of God, and to give participating inmates the opportunity to see that recovery from addiction is possible. Our hope is that the participating inmates will embrace the message of recovery, carry the message of recovery and begin the find a path of grace for themselves through Jesus. We are proud of Brandee and Tiffany for being such great leaders. They are, themselves, graduates of the Path of Grace program and proof that this program works.



Tiffany Garner



Brandee Wilson

*Path of Grace conducts a support group meeting at Walton Co. Jail every Thursday. The class is attended by 10-15 female inmates each week. Tiffany or Brandee conduct the class and they always do a great job of encouraging the individuals to talk about their present situation so they can minister to them. They encourage, re-enforce and inspire the inmates, that they too can make a change in their lives. They aren't defined by their past or even a criminal record, because we all have made mistakes somewhere along the road of life.*

*We have several classes and groups we conduct at the jail and this is one that I personally look forward to each week. God is using these ladies at Path of Grace to make a difference in the lives of individuals who think there isn't hope for them. Their words of encouragement and hope inspires the ladies here at the jail and gives them hope they can have a different life once they leave.*

*Andy Watkins - Inmate Welfare Program Manager  
Walton Co. Jail*



# IT TAKES A TEAM

## FORMER PROGRAM RESIDENT HIRED TO BE SUPERVISOR OF HOMES

Kimber Givens is a former resident of the Path of Grace who remained in the POG program for 22 months before graduating in October, 2018. In the last year of Kimber’s residency in the program she served as the House Manager at our main campus at 860 E. Hewitt in Santa Rosa Beach. Kimber did such a great job at managing; that we hired her to be our Supervisor of Homes. In her new role, Kimber will be overseeing our homes and the resident house mothers at each of our three locations, ensuring the homes are uniformly managed. Kimber will also oversee residents’ doctor appointments as well as the medicine prescribed. In addition, Kimber will be in charge of random drug testing of all the residents while she also provides additional management support for the program. We are very excited to have Kimber join our team!



### PATH OF GRACE COUNSELOR

*It has been a privilege to be the licensed Mental Health Counselor working with the ladies at the Path Of Grace. I have been part of this program for the past 8 years. My role is to work with the residents in individual, group and marriage and family therapy. Path of Grace is a longer term recovery program. Therefore, It gives ladies the time often needed for healing and restoration to occur in their lives.*

*I would like thank each of you for all that you do to make The Path of Grace what it is! We couldn’t do our part without your continued support!*

Valerie Peterson is a Licensed Mental Health Counselor in the State of Florida, as well as a National Board Certified Counselor. Valerie is also in private practice with Destin Counseling Center.

# YOUR GIFT, YOUR GRACE



# OUR NEW HOME !



GRADUATES CELEBRATING RECOVERY

Melissa



Sept. 25, 2017

Sabrina



July 24, 2017

Brittany



April 25, 2017

Amber



March 24, 2017

Catherine



July 21, 2015

Megan



April 27, 2016

Mary



Dec. 28, 2016

Britt



Feb. 2, 2017

Colby



Sept. 9, 2016

Andrea



Dec. 16, 2016

Kimber



Jan. 21, 2017

Nikki



Nov. 29, 2015

Priscilla



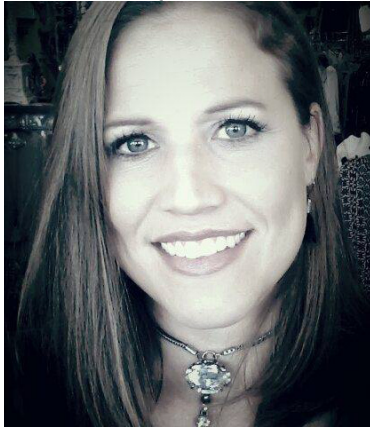
Aug. 14, 2017

Brandy



June 15, 2017

Stephanie



July 16, 2015

Shannon



Feb. 1, 2016

HAPPINESS, JOY & PEACE WITH RECOVERY



# WE THANK OUR DONORS

We are so very grateful for the completion of construction of our two new buildings on the 860 E. Hewitt campus. Already in October and November we have hosted five graduations in our new meeting room! That construction could not have been undertaken without the support and contributions of so many in our community. The participating support was broad at all levels of contribution and we know we are blessed to have a community that is there to help the Path of Grace expand upon its mission of bringing recovery and restoration of lives where addiction to drugs and alcohol have been thieves, undermining women from living out the lives that God intended for them.

A few of the contributions are remarkable and we want to call them out. In doing so, though, we want to remind our readers that all of the revenue we generate from the thrift store sales are used to offset the costs of program operations. In embarking upon the construction of facilities, the objective was to expand upon the number of women we can have in the program at any one time. Mindful of that, the board determined that it would be counterproductive to saddle the thrift store sales revenue with the payment of construction costs or the costs of debt service if loans were taken to pay for construction.

To assure that every thrift store dollar is committed to serving more women, the board launched a capital campaign to pay for construction costs and, again, that's why your contributions are so important.

We would like to thank and honor the following donors for their significant financial donations to Path of Grace.



Crawford Sandefur



John & Peggy Crunk



Jens & Margi Bach



Chuck & Shirley Simpson

# OUR MISSION

Our mission continues to focus on the recovery of women from the grips of drug or alcohol addiction, restoration of their lives, and restoration of their relationships with their children and families. We strive to cover the costs of operating the program through our thrift store sales. Your continued contribution of gently used furnishings, clothing, art work, transportation, tools, toys, etc. is vital to enabling our mission.



Many of the women who come to our program do not have the financial resources required to pay for rehabilitation. The cost of most recovery programs is very high; many thousands of dollars per month. Sensitive to that and sensitive to the enormous challenge of addiction and poverty combined, Path of Grace charges only \$800 for all we do for each resident for the entire 9 month to 24 month period of commitment to the program that we require from each resident. We believe that, with faith, time is required to restore lives and sustain recovery.

To help more women find recovery, we need your help through monetary donations as well. Please give. You can do that by sending your donation to Path of Grace at PO Box 9261, Miramar Beach, FL 32550. You can also stop by the thrift store where we can greet you and thank you in person.

## Note From Director

The Path of Grace is now helping more women than we ever have. Our total bed count is soon to be at 35, thanks to the two new buildings that your generosity made possible. It's extremely comforting to know we can offer help to more women needing it. I'm forever grateful to all of the givers in this community that choose to be a part of this ministry. I see every day the difference this program is making in the lives of our residents and their families as well.

I want to add that I see many women in the program being led to Jesus Christ. That's the best! There's nothing better than witnessing someone go from down and out, on drugs and alcohol, to blossoming and thriving in their walk with GOD! To me GOD is the key to their success!

I see enthusiasm taking root here! It's contagious! Many more will make it and many more will be saved!

With a Grateful Heart,

*Eddie*





# NEW ADDITION

## TO PATH OF GRACE

Path of Grace would like to welcome our new Christian counselor & life coach Scarlett Stephenson. Scarlett has a Bachelor's degree from Samford University in Birmingham, Alabama and earned a Master's degree from Florida State University in Social Work. Scarlett has been an ordained minister since 1981 when she graduated from Rhema Bible Training Center. She is the founder of Grace Counseling Center, in which she empowers clients to become unimpeded from anxiety, depression, stress and other mental and emotional traumas. Scarlett, is also the author of the book, God Loves Women, in it she declares God's great desire to entrust His daughters. Scarlett resides in Panama City, Florida where she is Pastor of Goodness of God Church. May God bless each and every one person who has been part of making this program a reality and for making it possible for the program to expand.



.....

## BOARD OF DIRECTORS

Paul Jones *President*  
Frank Walker  
Jack Anthony  
Herb Weinand  
Debbie Speigner  
Dr. Clif Emerson  
John Crunk

Eddie Mansfield *Managing Director*  
Rick Gudoian  
Charles McMurtry  
Danon McMurtry  
Janine Stouse  
Maurice Stouse

# PATH OF GRACE THRIFT STORE



At Path of Grace we strive to cover the costs of operating the program through our thrift store sales. Your continued contribution of quality furniture, paintings, artwork, appliances, electronics, household goods, books and designer apparel and jewelry is vital to enabling our mission. Your donations make the Path of Grace program possible! The Path of Grace residents work daily at the Thrift Store. Through their jobs and leadership roles at the thrift store the women are learning self discipline, confidence and starting a savings plan. This savings plan is a gift from Path of Grace and its purpose is to give the residents a clean and fresh start as they leave the program.





# OUR FUTURE

## SERENITY VILLAGE

To ensure the continued recovery of the women and reunite mothers with their children, Path of Grace has plans to develop Serenity Village. The development of Serenity Village will begin on the first 2 acres of the property with 12 transitional cottages and a chapel. Serenity Village transitional cottages will be for women who have graduated from the Path of Grace program and graduates who have children waiting to be reunited with them. Many mothers who are in the Path of Grace program have temporarily lost their children because of their addictions. Broken hearted yet determined, these mothers are dedicated to rebuild their lives, so that one day they can be reunited to their beloved children. Serenity Village will provided a safe alcohol and drug free environment for graduates. This environment creates a place for mothers and children to thrive together as a family again. To this day, every women that has remained connected to Path Of Grace after graduating have remained drug/alcohol free. This affordable living village for the graduates ensures they remain drug/alcohol free, remain connected to their recovery support groups, and hold down a job. There is no program like this across the Emerald Coast so the need for Serenity Village is paramount.



# COMMUNITY SUPPORT

Path of Grace would like to say thank you for the dental care of Dr. Reese Ruder, and his wife Dr. Sarika Tamaskar, Dr. Cassidy Cook and Dr. John Savage. The dentist in our community make it possible for all the women in the Path of Grace program to receive the dental care that they need. The women at Path of Grace experience all sorts of medical issues along their journey to recover and they are in constant need of medical checkups and dental work. If you are a medical professional in the area looking for a way to support the community, we ask that you would consider partnering with Path of Grace. Your support will help make recovery possible!

